

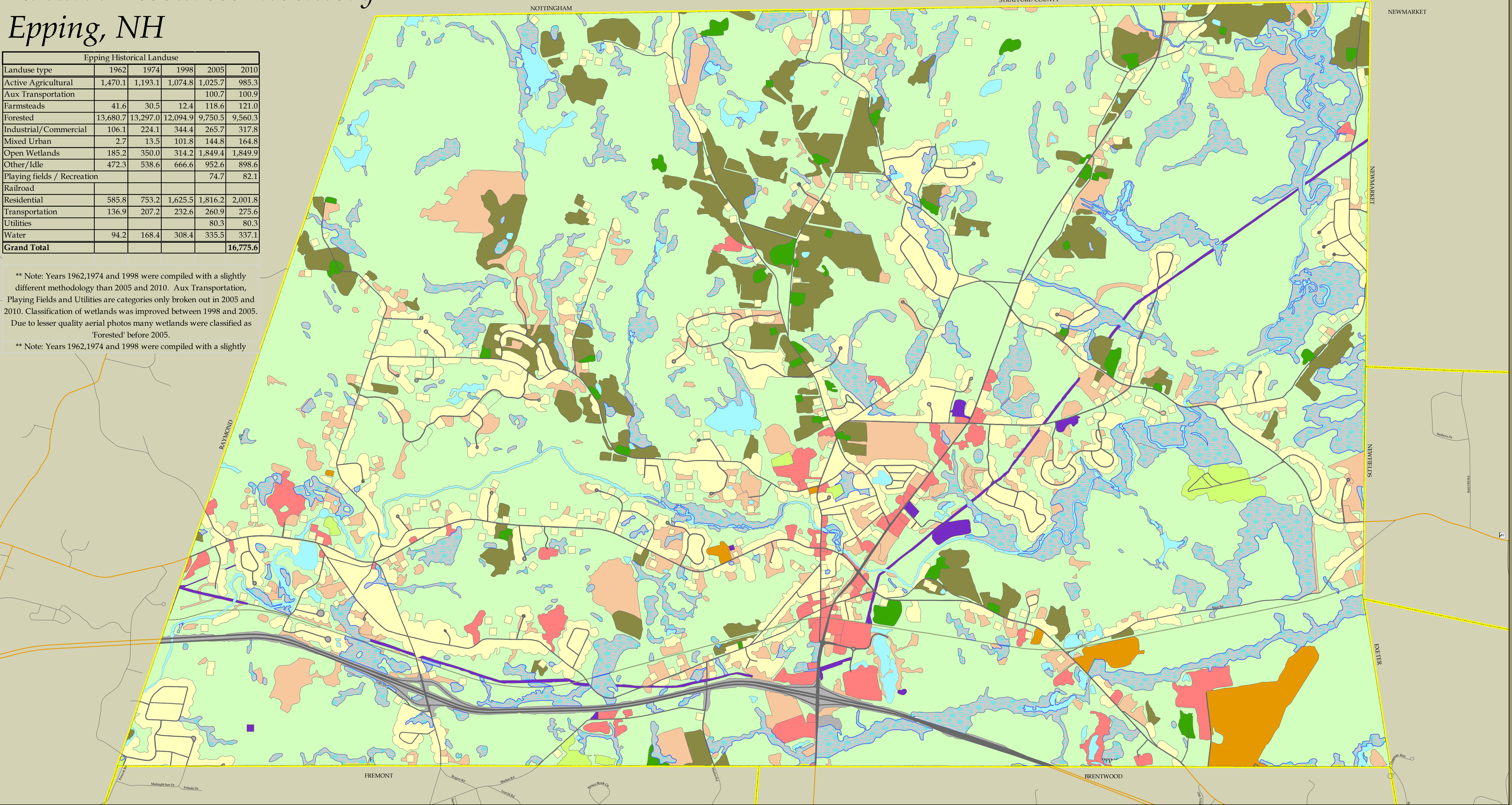
Natural Resources Inventory

Epping, NH

Epping Historical Landuse					
Landuse type	1962	1974	1998	2005	2010
Active Agricultural	1,470.1	1,193.1	1,074.8	1,025.7	985.3
Aux Transportation				100.7	100.9
Farmsteads	41.6	30.5	12.4	118.6	121.0
Forested	13,680.7	13,297.0	12,094.9	9,750.5	9,560.3
Industrial/Commercial	106.1	224.1	344.4	265.7	317.8
Mixed Urban	2.7	13.5	101.8	144.8	164.8
Open Wetlands	185.2	350.0	314.2	1,849.4	1,849.9
Other/Idle	472.3	538.6	666.6	952.6	898.6
Playing fields / Recreation				74.7	82.1
Railroad					
Residential	585.8	753.2	1,625.5	1,816.2	2,001.8
Transportation	136.9	207.2	232.6	260.9	275.6
Utilities				80.3	80.3
Water	94.2	168.4	308.4	335.5	337.1
Grand Total					16,775.6

** Note: Years 1962,1974 and 1998 were compiled with a slightly different methodology than 2005 and 2010. Aux Transportation, Playing Fields and Utilities are categories only broken out in 2005 and 2010. Classification of wetlands was improved between 1998 and 2005. Due to lesser quality aerial photos many wetlands were classified as 'Forested' before 2005.

** Note: Years 1962,1974 and 1998 were compiled with a slightly



This 2010 Landuse was accomplished by screen digitizing land use/land cover polygons at a recommended display scale of 1:2,400 (1"=200') using 1-foot resolution, natural color aerial photography, acquired in April of 2010, as the background.

- Interstate
- US Route
- State Route
- Local

Land Use Type

- Active Agricultural
- Aux Transportation
- Farmsteads
- Forested
- Industrial/Commercial
- Mixed Urban
- Open Wetlands
- Other/Idle
- Playing fields / Recreation
- Railroad
- Residential
- Transportation
- Utilities
- Water

Base Features (transportation, political and hydrographic) were automated from the USGS Digital Line Graph data, 1:24,000, as archived in the GRANIT database at Complex Systems Research Center, Institute for the study of Earth, Oceans and Space, University of New Hampshire, Durham, NH; 1992-1999. The roads within the Rockingham Planning Region have been updated by Rockingham Planning Commission and by NH Department of Transportation through ongoing efforts.

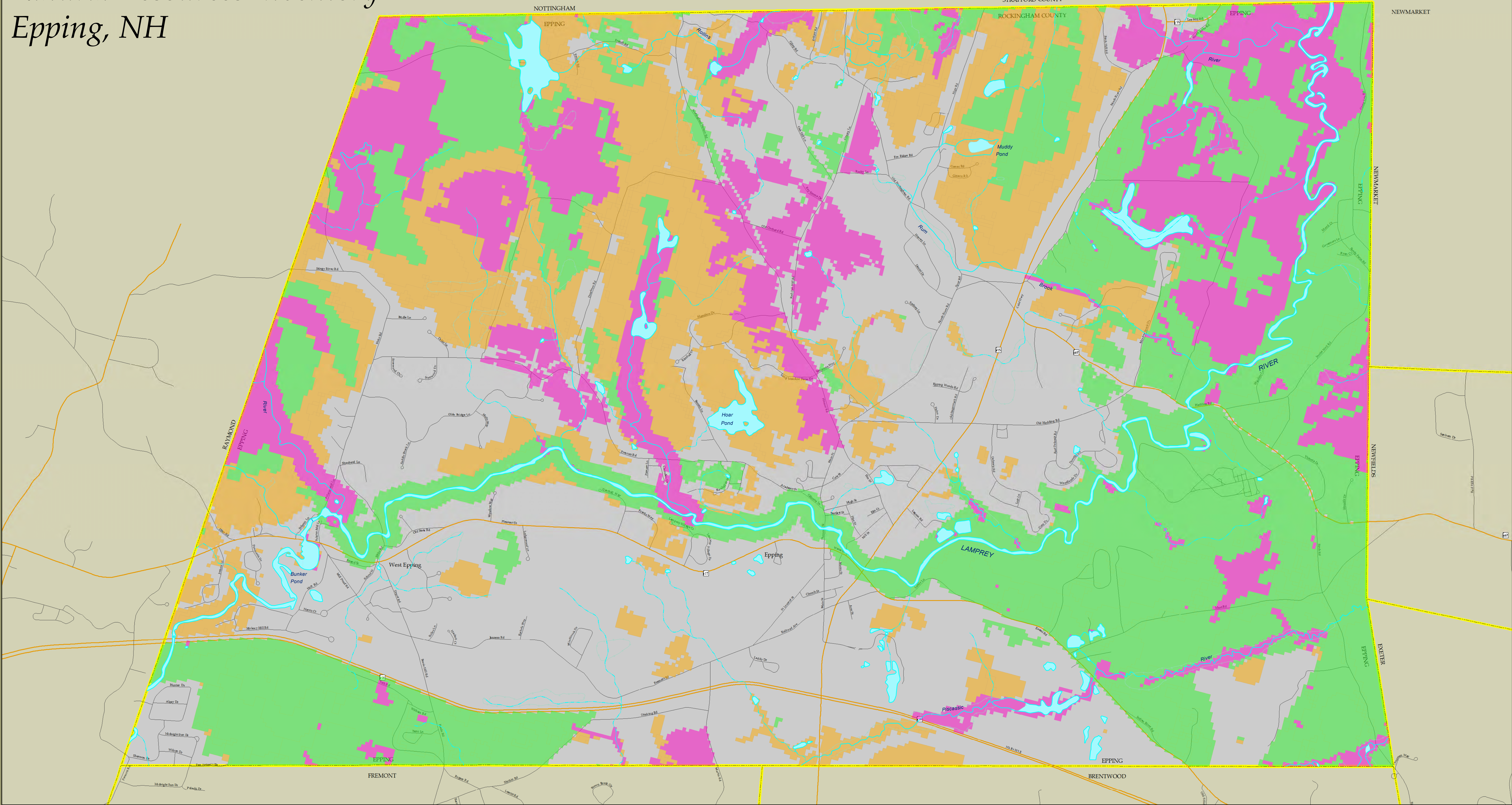
NOTE: Base features for areas surrounding the Rockingham Region may be shown on this map. These features were automated from USGS 1:100,000 scale digital data sources. This information was provided for reference only. RPC makes no claim to its completeness or accuracy.

Digital Data in NH GRANIT represent the efforts of the contributing agencies to record information from the cited source materials. Complex Systems Research Center (CSRC), under contract to the Office of State Planning (OSP), and in consultation with cooperating agencies, maintains a continuing program to identify and correct errors in these data. OSP, CSRC, and the cooperating agencies make no claim as to the validity or reliability or to any implied uses of these data.



Natural Resources Inventory

Epping, NH



Map 2 - Wildlife Action Plan

The NHF&G released the NH Wildlife Action Plan in 2005, it was subsequently updated in 2010. This data was created by aggregating the highest quality habitats within each habitat type and then reranking based on co-occurrence. This data shows the most critical wildlife habitat locations and thus, important wildlife areas.

2015 Wildlife Action Plan Habitat Tiers

- Stream
- Waterbody
- Swamp / Marsh
- Interstate
- US Route
- State Route
- Local

- 1 Highest Ranked Habitat in New Hampshire
- 2 Highest Ranked Habitat in Biological Region
- 3 Supporting Landscapes

Base Features (transportation, political and hydrographic) were automated from the USGS Digital Line Graph data, 1:24,000, as archived in the GRANIT database at Complex Systems Research Center, Institute for the study of Earth, Oceans and Space, University of New Hampshire, Durham, NH; 1992-1999. The roads within the Rockingham Planning Region have been updated by Rockingham Planning Commission and by NH Department of Transportation through ongoing efforts.

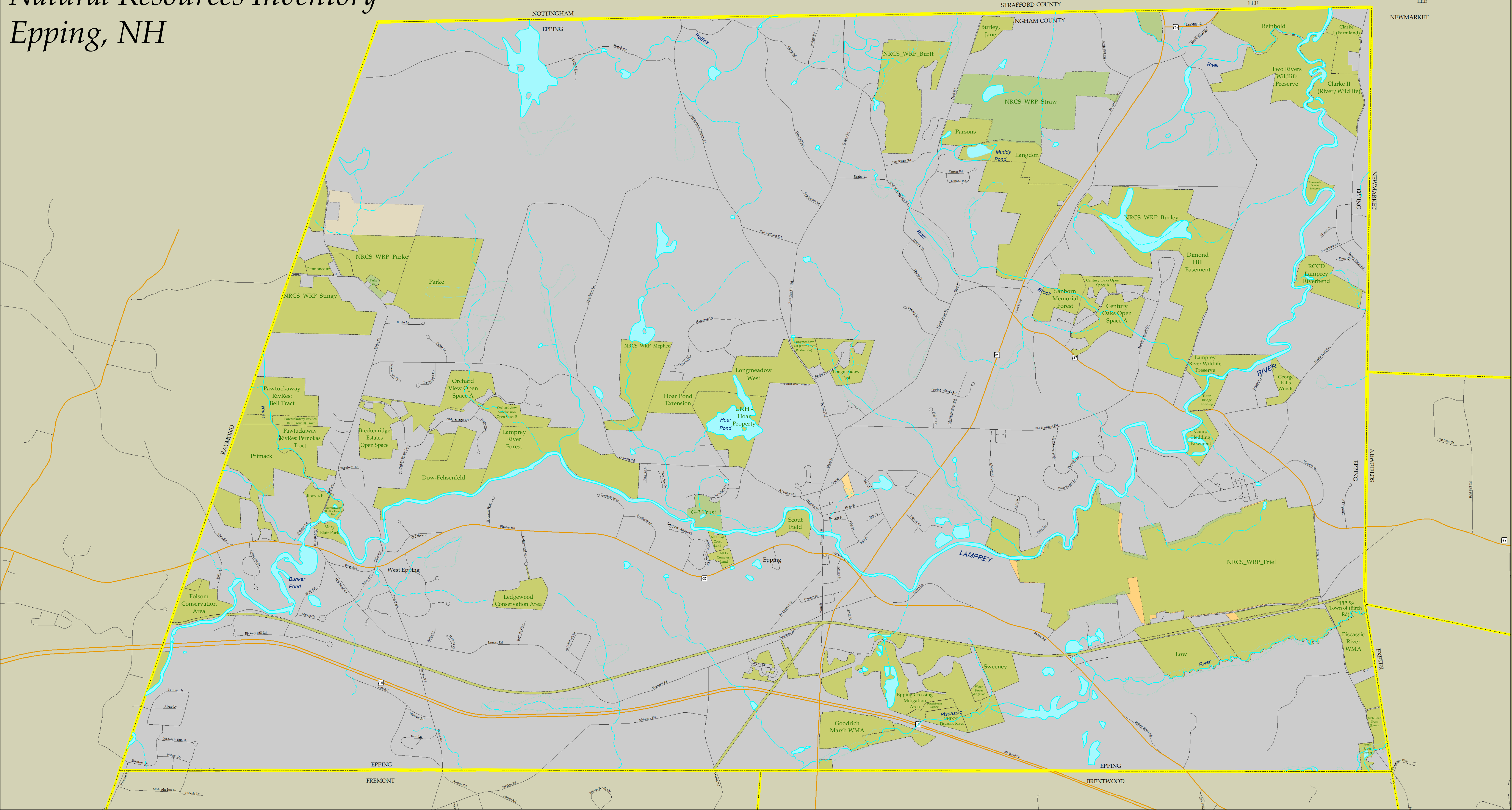
NOTE: Base features for areas surrounding the Rockingham Region may be shown on this map. These features were automated from USGS 1:100,000 scale digital data sources. This information was provided for reference only. RPC makes no claim to its completeness or accuracy.

Digital Data in NH GRANIT represent the efforts of the contributing agencies to record information from the cited source materials. Complex Systems Research Center (CSRC), under contract to the Office of State Planning (OSP), and in consultation with cooperating agencies, maintains a continuing program to identify and correct errors in these data. OSP, CSRC, and the cooperating agencies make no claim as to the validity or reliability or to any implied uses of these data.



Natural Resources Inventory

Epping, NH



Conservation and Public Lands
The conservation lands data layer describes parcels of land of two or more acres that are mostly undeveloped and are protected from future development. Unique or adjoining smaller parcels, as well as selected state-owned parcels, may also be included.

Unverified Protected Lands
This dataset was created from a number of dataset submitted to the RPC from various entities (mostly towns). This dataset has not been verified and has no backing data.

Conservation and Public Lands

- Conservation / Public Lands
- Unverified Potential Conservation Land
- Conservation Land (From Epping CC 2011)

- Stream
- Waterbody
- Swamp / Marsh
- Interstate
- US Route
- State Route
- Local

Base Features (transportation, political and hydrographic) were automated from the USGS Digital Line Graph data, 1:24,000, as archived in the GRANIT database at Complex Systems Research Center, Institute for the study of Earth, Oceans and Space, University of New Hampshire, Durham, NH; 1992-1999. The roads within the Rockingham Planning Region have been updated by Rockingham Planning Commission and by NH Department of Transportation through ongoing efforts.

NOTE: Base features for areas surrounding the Rockingham Region may be shown on this map. These features were automated from USGS 1:100,000 scale digital data sources. This information was provided for reference only. RPC makes no claim to its completeness or accuracy.

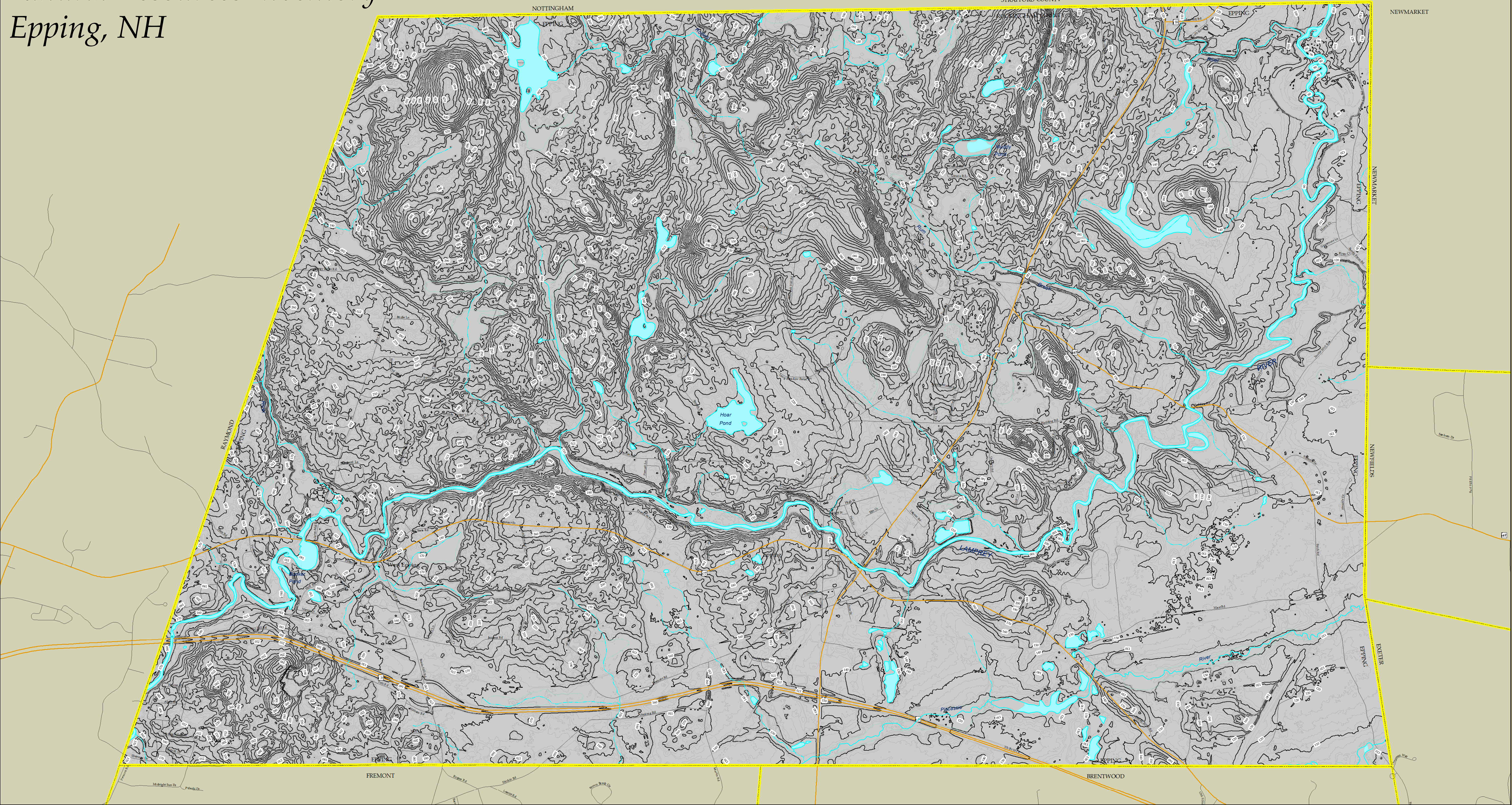
Digital Data in NH GRANIT represent the efforts of the contributing agencies to record information from the cited source materials. Complex Systems Research Center (CSRC), under contract to the Office of State Planning (OSP), and in consultation with cooperating agencies, maintains a continuing program to identify and correct errors in these data. OSP, CSRC, and the cooperating agencies make no claim as to the validity or reliability or to any implied uses of these data.



Map 3 - Conservation & Public Lands

Natural Resources Inventory

Epping, NH



Map 4 - Topography

Conservation and Public Lands
The conservation lands data layer describes parcels of land of two or more acres that are mostly undeveloped and are protected from future development. Unique or adjoining smaller parcels, as well as selected state-owned parcels, may also be included.

Unverified Protected Lands
This dataset was created from a number of dataset submitted to the RPC from various entities (mostly towns). This dataset has not been verified and has no backing data.

2011 Contours 2' From LiDAR

Contour

- Major Contour (10')
- Interval contour (2')

- Stream
- Waterbody
- Swamp / Marsh
- Interstate
- US Route
- State Route
- Local

Base Features (transportation, political and hydrographic) were automated from the USGS Digital Line Graph data, 1:24,000, as archived in the GRANIT database at Complex Systems Research Center, Institute for the study of Earth, Oceans and Space, University of New Hampshire, Durham, NH; 1992-1999. The roads within the Rockingham Planning Region have been updated by Rockingham Planning Commission and by NH Department of Transportation through ongoing efforts.

NOTE: Base features for areas surrounding the Rockingham Region may be shown on this map. These features were automated from USGS 1:100,000 scale digital data sources. This information was provided for reference only. RPC makes no claim to its completeness or accuracy.

Digital Data in NH GRANIT represent the efforts of the contributing agencies to record information from the cited source materials. Complex Systems Research Center (CSRC), under contract to the Office of State Planning (OSP), and in consultation with cooperating agencies, maintains a continuing program to identify and correct errors in these data. OSP, CSRC, and the cooperating agencies make no claim as to the validity or reliability or to any implied uses of these data.



A map of New Hampshire divided into six soil regions. The regions are labeled as follows: NH001 (orange, located in the southwest), NH010 (yellow, located in the north), NH011 (dark green, located in the northeast), NH012 (light yellow, located in the west), NH002 (light green, located in the south), and NH013 (light orange, located in the east). The map is titled "General Soils" in a large, bold, italicized font at the bottom right.

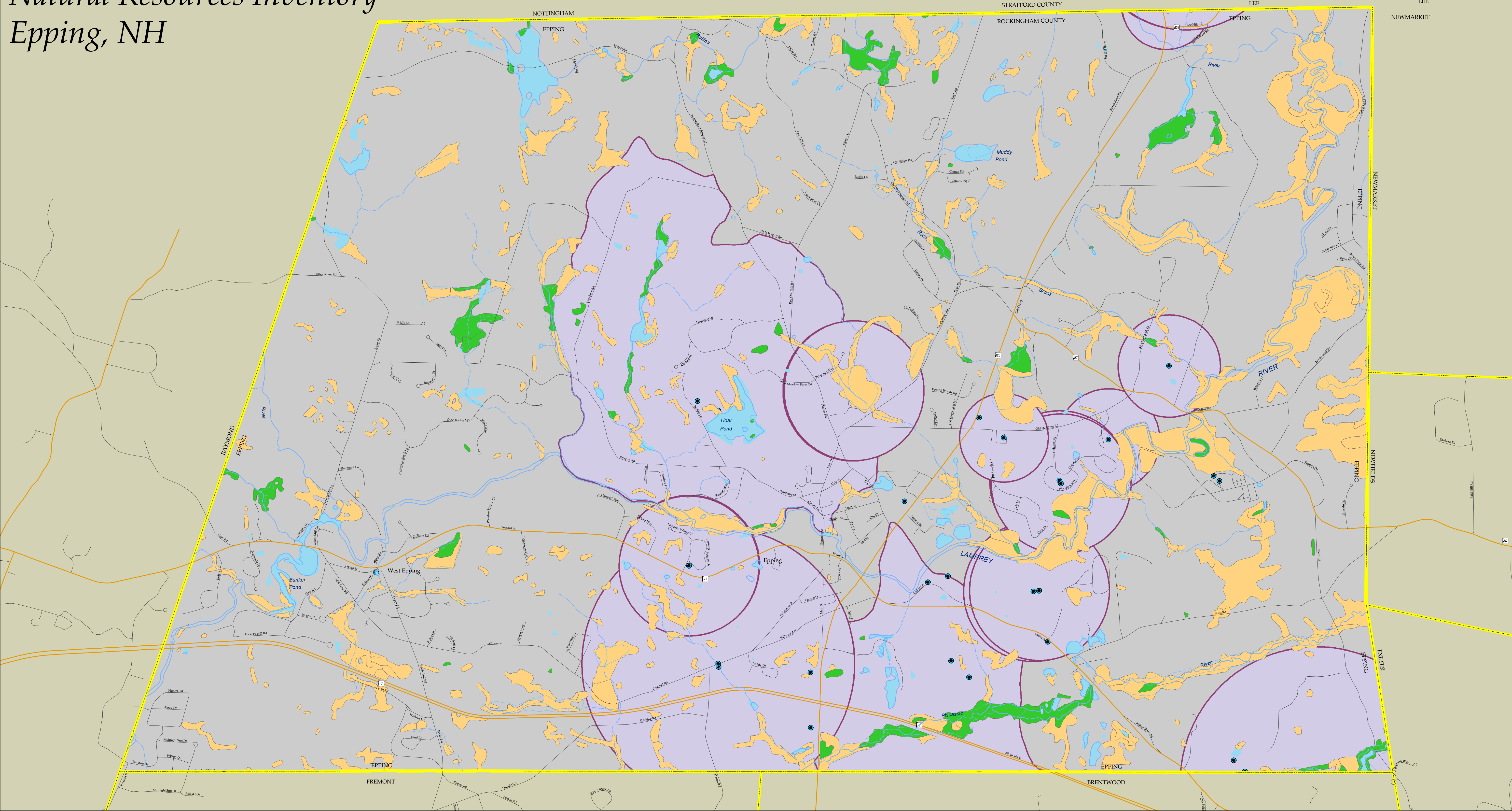


LOCKINGHAM
PLANNING
COMMISSION



Natural Resources Inventory

Epping, NH



Public Water Supply Sources
This data layer contains point locations of public water supply sources, including wells and surface water intake locations as registered with the NHDES, Water Supply Engineering Bureau. Locations were automated by the U.S. Environmental Protection Agency, Region I and by the NHDES Groundwater Protection Bureau and Water Supply Engineering Bureau. This dataset is updated monthly and was obtained by RPC in March 2017.

Drinking Water Source Protection Areas
have been delineated by the NH Department of Environmental Services as part of the State's drinking water protection program under the Groundwater Protection Act, RSA 485-C. The coverage is limited to sources for community and non-community, non-transient public water systems. Under the State's program, a protection area is the area from which water is likely to flow toward and reach a water supply source. This map shows wellhead delineations for groundwater sources and watershed delineations for surface water intakes and groundwater sources under the direct influence of surface water. These areas are used by the Department of Environmental Services in setting priorities for protection activities. Last Updated 2017.

Wetland Type

- Open Water
- Freshwater Emergent Wetland
- Freshwater Forested/Shrub Wetland
- Public Supply Wells (active)
- Wellhead Protection Areas

- Stream
- Waterbody
- Swamp / Marsh
- Interstate
- US Route
- State Route
- Local

Base Features (transportation, political and hydrographic) were automated from the USGS Digital Line Graph data, 1:24,000, as archived in the GRANIT database at Complex Systems Research Center, Institute for the study of Earth, Oceans and Space, University of New Hampshire, Durham, NH; 1992-1999. The roads within the Rockingham Planning Region have been updated by Rockingham Planning Commission and by NH Department of Transportation through ongoing efforts.

NOTE: Base features for areas surrounding the Rockingham Region may be shown on this map. These features were automated from USGS 1:100,000 scale digital data sources. This information was provided for reference only. RPC makes no claim to its completeness or accuracy.

Digital Data in NH GRANIT represent the efforts of the contributing agencies to record information from the cited source materials. Complex Systems Research Center (CSRC), under contract to the Office of State Planning (OSP), and in consultation with cooperating agencies, maintains a continuing program to identify and correct errors in these data. OSP, CSRC, and the cooperating agencies make no claim as to the validity or reliability or to any implied uses of these data.

